

How to Use WA Atlas

Overview of WA Atlas

The SLIP map viewer, WA Atlas, provides a generic spatial portrayal service to view spatial data available through SLIP Enabler.

As the WA Atlas application runs within the web browser there is no need to download and install any third party software. However, it is essential that the computer running WA Atlas has, as a minimum, the Java™ Runtime Library version 1.4 installed.

Key features of WA Atlas include:

- Ability to preview maps composed of selected spatial datasets using a web browser
- Access to metadata for a spatial dataset or data service presented in the map viewer by integration with the SLIP Enabler Catalogue (Interragator+)
- Ability to link to external OGC WMS sources to include additional spatial layers for display
- Zoom and pan navigation capabilities
- Display of distance between designated points on a map
- Display of longitude and latitude coordinates for a designated point on a map
- Retrieve and display map features that match spatial attribute criteria
- Display location information for a designated spatial coordinate
- Print capabilities

WA Atlas has recently been upgraded to provide the following additional features:

- Drag and drop functionality in the layers menu
- A bookmarking tool, and
- Searching by address, locality or point of interest

The following pages illustrate the functionality within the WA Atlas application.

Accessing WA Atlas

WA Atlas can be launched from the SLIP Enabler Portal by clicking the WA Atlas icon on the left hand side of the portal.



Figure 1 – Launching WA Atlas

Alternatively open the following URL: <https://www2.landgate.wa.gov.au/waatlas> or click the “Launch Map Viewer” button under the map in Interrogator+ Advanced Search.

Whilst the Map Viewer web page is loading, the following disclaimer window will open as shown below. Once the Data Consumer has read the terms they will need to choose either “Agree” or “Not Agree”.

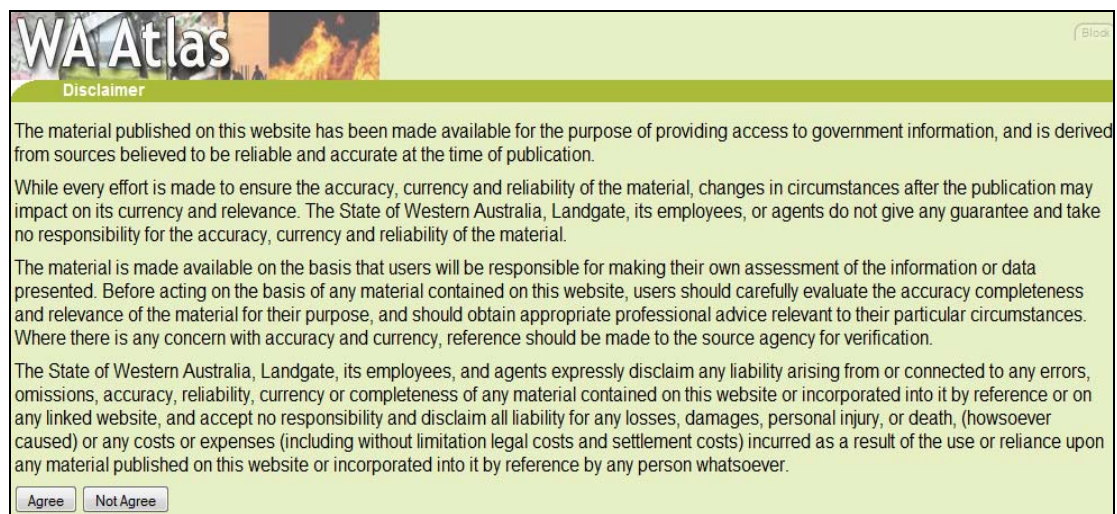


Figure 2 – WA Atlas Disclaimer Page

Assuming the Data Consumer has opted for “Agree” the WA Atlas start page will be displayed as shown below.



Figure 3 – WA Atlas Home Page

By default the “Search” shutter will be opened to a single “Google” like search field.

The Search shutter allows a Data Consumer to search by address, location or place of interest.

As the search function is integrated with Landgate’s Address Verification Service (AVS) if the enquiry doesn’t completely match up with details in the database, an alternative address or list of alternative addresses or locations that match closely with the enquiry will be returned.

The Layers shutter lists a set of pre-loaded public data sets for the Data Consumer to use.

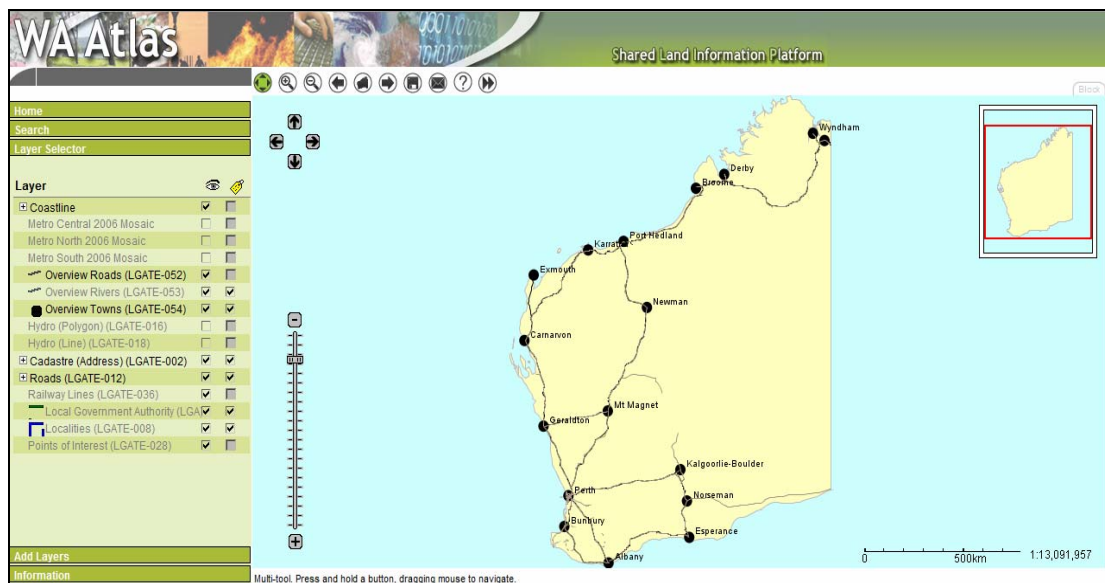


Figure 4 – WA Atlas Home Page – Layers shutter

If the Data Consumer wishes to add further layers, either from WMS or WFS, then they can add them by opening the Add Layer shutter.

A variety of WMS services can be chosen from a drop down menu by clicking the “Add WMS Layer” link.

In this example the “SLIP WMS Public Imagery” service has been chosen.

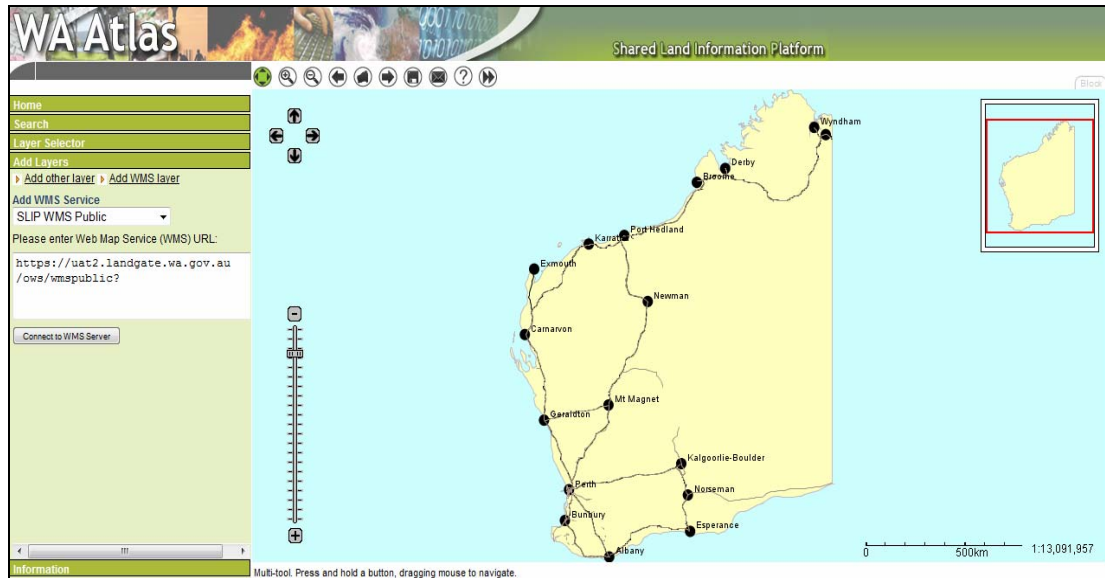


Figure 5 - Add WMS Window

Clicking “Connect to WMS Server” the available layers in that service are displayed.



Figure 6 – Add WFS Layer shutter

The Data Consumer can select the required layer, or layers, then choose the “Add WMS layers” button. The Layers shutter will open with the selected layer/s added to the bottom of the list.

In this example Aboriginal Communities (DIA-002) has been selected.

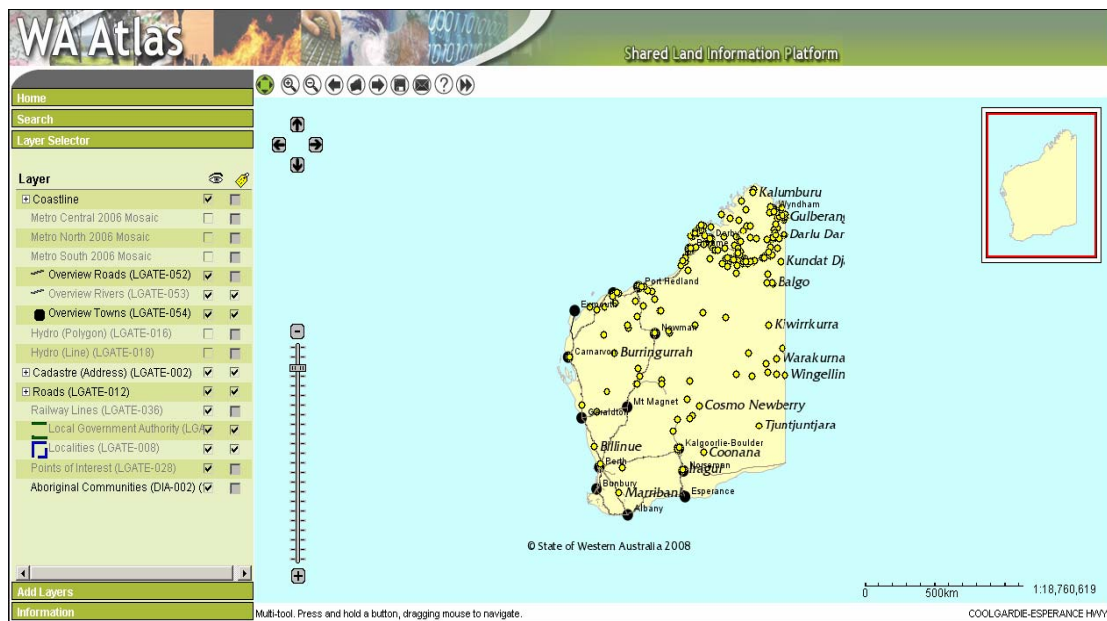


Figure 7 – Layer shutter

Layers can be reordered by simply dragging and dropping.


By clicking the bookmarking icon  the current view can be saved and retrieved from a URL link provided under the Information shutter. Note bookmarks will expire after 90 days.



Figure 8 – Information shutter – saved bookmark